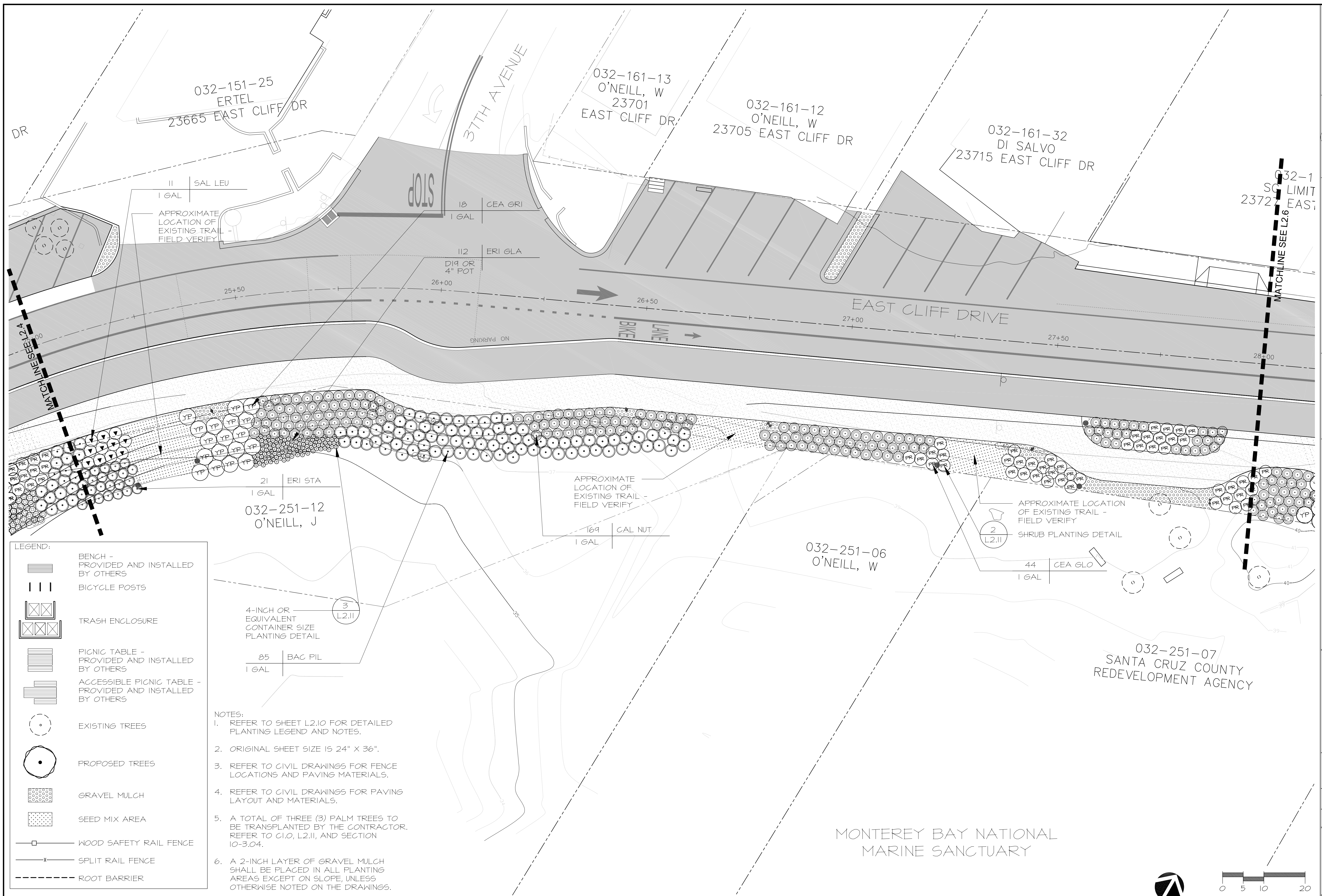


Santa Cruz County
 Design Professional
 701 Ocean St., Rm. 410
 Santa Cruz, CA 95060-4000
 Phone: (831) 454-2160
 Fax: (831) 454-2385

PLANTING PLAN
 EAST CLIFF DRIVE PARKWAY PROJECT
 32nd AVENUE TO 41st AVENUE
 County of Santa Cruz
 California

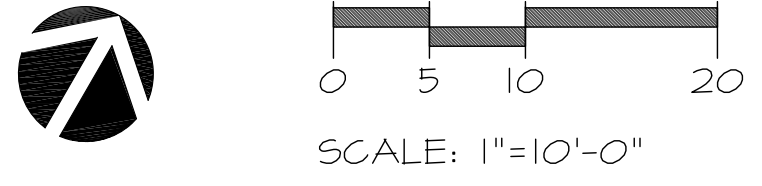
REV	BY	DATE	DESCRIPTION
1	JLJ	03/22/10	75% SUBMITTAL
2	JLJ	10/08/10	95% SUBMITTAL
3	JLJ	01/12/11	BID SET

DATE: 01/12/2011
 SCALE: 1"=10'-0"
 DESIGNED BY: JLJ
 DRAFTED BY: ED/MO
 CHECKED BY: JLJ
 JOB NO.: 08-150
 FILE: 125 EAST CLIFF PARKWAY PLANTING PLAN.rvt



- LEGEND:
- BENCH - PROVIDED AND INSTALLED BY OTHERS
 - BICYCLE POSTS
 - TRASH ENCLOSURE
 - PICNIC TABLE - PROVIDED AND INSTALLED BY OTHERS
 - ACCESSIBLE PICNIC TABLE - PROVIDED AND INSTALLED BY OTHERS
 - EXISTING TREES
 - PROPOSED TREES
 - GRAVEL MULCH
 - SEED MIX AREA
 - WOOD SAFETY RAIL FENCE
 - SPLIT RAIL FENCE
 - ROOT BARRIER

- NOTES:
1. REFER TO SHEET L2.10 FOR DETAILED PLANTING LEGEND AND NOTES.
 2. ORIGINAL SHEET SIZE IS 24" X 36".
 3. REFER TO CIVIL DRAWINGS FOR FENCE LOCATIONS AND PAVING MATERIALS.
 4. REFER TO CIVIL DRAWINGS FOR PAVING LAYOUT AND MATERIALS.
 5. A TOTAL OF THREE (3) PALM TREES TO BE TRANSPLANTED BY THE CONTRACTOR. REFER TO C1.0, L2.11, AND SECTION 10-3.04.
 6. A 2-INCH LAYER OF GRAVEL MULCH SHALL BE PLACED IN ALL PLANTING AREAS EXCEPT ON SLOPE, UNLESS OTHERWISE NOTED ON THE DRAWINGS.
 7. FOR REMOVAL OF EXISTING INVASIVE AND NON-NATIVE PLANT SPECIES, REFER TO SPECIFICATION SECTION 10-2.13.



MONTEREY BAY NATIONAL MARINE SANCTUARY